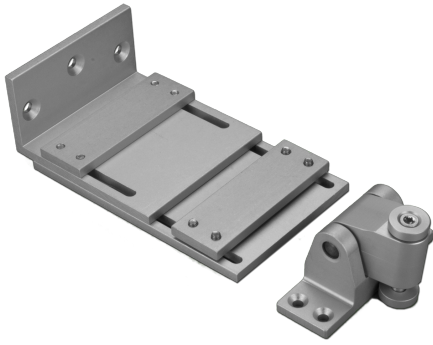


Technical Data



ARTICLE INFO

The bracket K-KL²-M is an accessory for Folding Arm² actuators.

Application:

- Standard bracket set for outward opening bottom-hung and top-hung sashes, mounting on the main closing edge, for PA-KL²

Overview of the K-KL²-M bracket:

- Accessories for the folding arm
- for mounting on the (main) closing edge of outwardly opening SHEV windows

TECHNICAL DATA

Matchcode	K-KL ² -M
Article name	Bracket K-KL ² -M
Part number	K2 1610
Weight	0.7