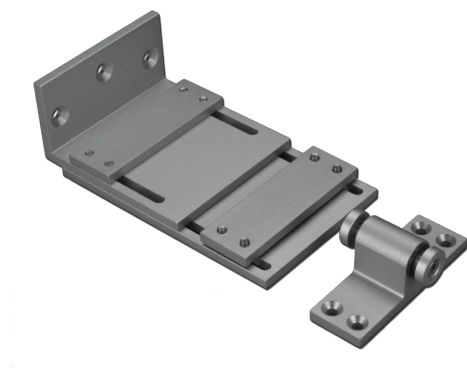


## Technical Data



### ARTICLE INFO

The bracket K-KL<sup>2</sup>-S is an accessory for Folding Arm<sup>2</sup> actuators.

#### Application:

- Standard bracket set for outward opening bottom-hung and top-hung sashes, mounting on secondary closing edge, for PA-KL<sup>2</sup>

#### Overview of the K-KL<sup>2</sup>-S bracket:

- Accessories for the folding arm<sup>2</sup>
- for mounting at the secondary closing edges of the SHEV window opening outwards

### TECHNICAL DATA

Matchcode	K-KL <sup>2</sup> -S
Article name	Bracket K-KL <sup>2</sup> -S
Part number	K2 1612
Mounting way	aufgesetzt
Weight	0.7