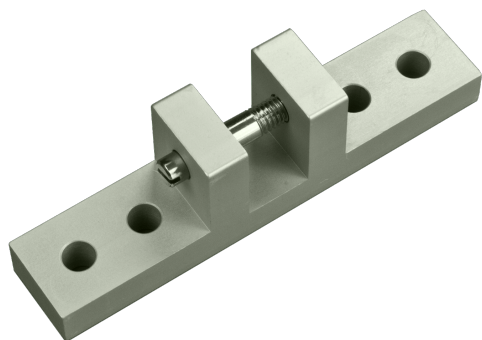


Technical Data



ARTICLE INFO

The top bracket type OK-1500 is an accessory for the heavy duty linear actuator EA-L-100-180.

Application:

- Upper bracket, type OK-1500, wing guide block for upper motor support for EA-L-100-180.

Top bracket OK-1500 at a glance:

- galvanized upper brackets for linear actuator type EA-L-100-180
- with wing guide
- including stud bolt (d = 6 mm) for spindle attachment

TECHNICAL DATA

Matchcode	OK-1500
Article name	Top bracket OK-1500
Part number	K2 1501 B
Weight	0.2