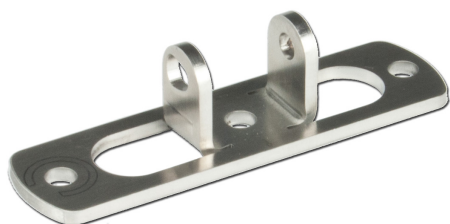


Technical Data**ARTICLE INFO**

The bracket K-K-OK-SK is an accessory for chain actuators (EA-K-50, EA-K-65, EA230-K-50, EA-K-30 und EA230-K-30).

Application:

- Replacement for upper bracket K-K50-OK for side attachment (e.g. skylight).
- use for flush window frame profiles
- for tensile and compressive load (90° fastening)

Overview of K-K-OK-SK bracket:

- Replacement for upper bracket K-K50-OK for lateral attachment (e.g. skylight)
- Mounting kit, consisting of wing blocks incl. bolt and lock washer
- Material: stainless steel
- Used for flush window frame profiles
- under tensile and compressive load

TECHNICAL DATA

Matchcode	K-K-OK-SK
Article name	Bracket K-K-OK-SK
Part number	K2 5106
Weight	0.2