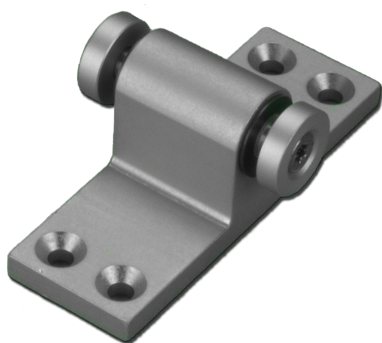


## Technical Data



### ARTICLE INFO

The bracket K-KL<sup>2</sup>-S is an accessory for Folding Arm<sup>2</sup> actuators. Upper bracket for lateral mounting opening outwards.

**Function:** Upper joint bracket for PA-KL<sup>2</sup>.

### Bracket K-KL<sup>2</sup>-S-OK at a glance:

- accessories for the folding arm
- upper bracket for lateral mounting opening outwards

### TECHNICAL DATA

Matchcode	K-KL <sup>2</sup> -S-OK
Article name	Bracket K-KL <sup>2</sup> -S-OK
Part number	K2 1609
Weight	0.1