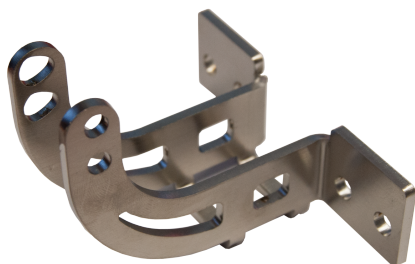


Technical Data**ARTICLE INFO**

The bracket K-K30-AKI-R is an accessory for chain actuators (for EA-K-30 and EA230-K-30)

Application:

- Replacement for upper bracket K-K50-OK for inward opening side hung windows, if hinges are on the left and combination actuator/bracket on the right hand side.

TECHNICAL DATA

| | |
|--------------|-----------------|
| Matchcode | K-K30-AKI-R |
| Article name | Bracket K-K30-R |
| Part number | K2 5108 |
| Weight | 0.2 |